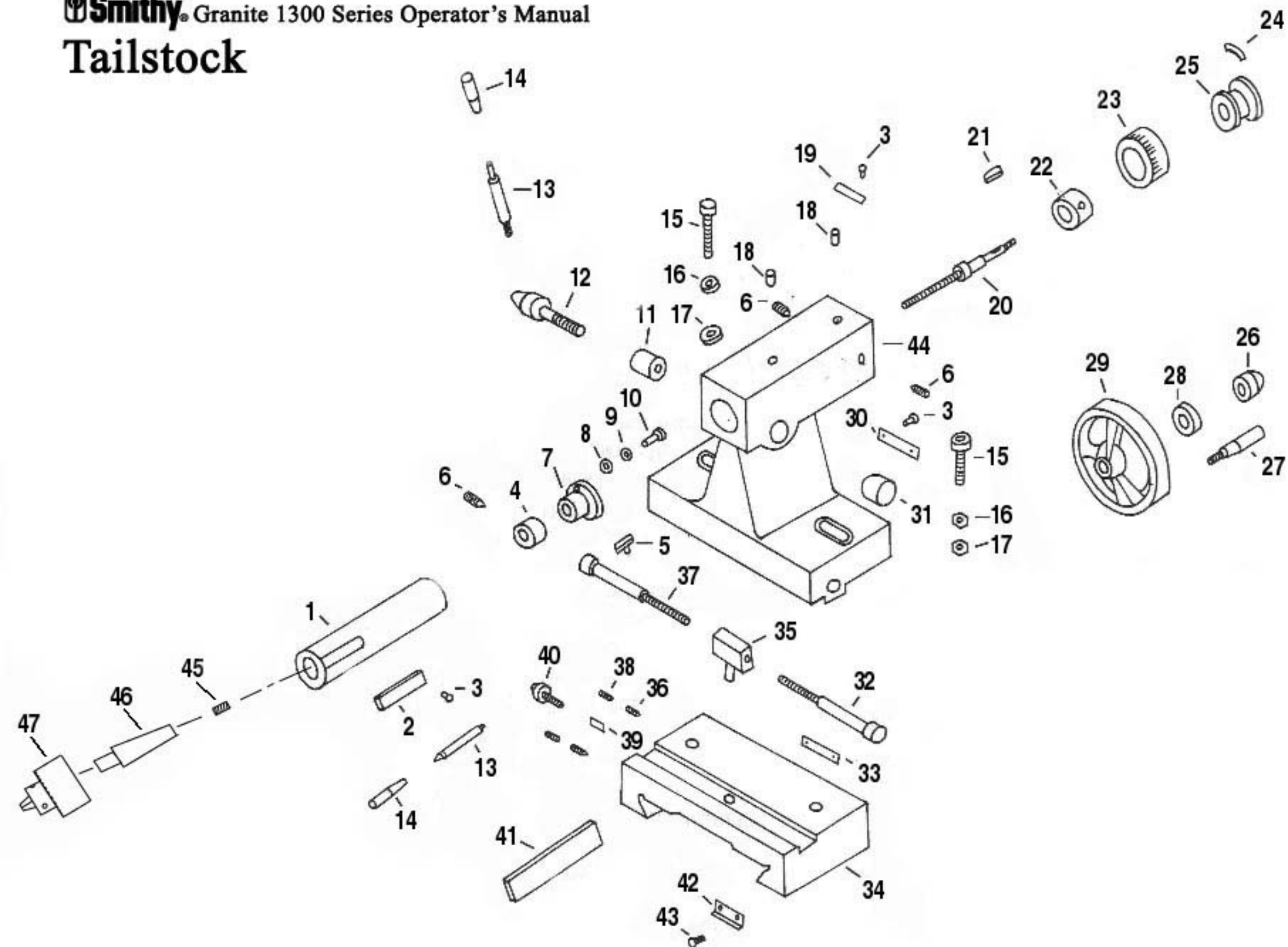


Smithy® Granite 1300 Series Operator's Manual
Tailstock



Tailstock

Diagram Number	Part Number	Reference Number	Description
1	G07001	5-04	Barrel
2	G07002	5-03	Ruler
3	G07003	GB827	Rivet
4	G07004	5-06	Nut
5	G07005	CQ9107.508	T-key
6	G07006	S11632	Setscrew M5x8
7	G07007	5-07	Adjusting nut
8	G07008	GB848	Washer M4
9	G07009	S18045	Lock washer M4
10	G07010	GB818	Setscrew M4x12
11	G07011	5-11	Locking piece (I)
12	G07012	5-10	Locking shaft
13	G07013	GB4141.15	Handle BM8x50
14	G07014	GB4141.14	Handle sleeve BM8x40
15	G07015	GB5783	Hex bolt M10x40
16	G07016	GB93	Lock washer M10
17	G07017	S18170	Washer M10
18	G07018	GB1155	Oiler 5mm (C30050)

Diagram Number	Part Number	Reference Number	Description
19	G07019	ZQ4124-63	Indicator
20	G07020	5-05	Screw
21	G07021	S21170	Key 4x20
22	G07022	5-08	Bushing
23	G07023	5-18	Dial
24	G07024	CQ9109.618	Spring piece
25	G07025	5-09	Dial seat
26	G07026	S18160	Acorn nut M10
27	G07027	GB4141.5	Handle M6x50 (Use G05074)
28	G07028	GB6172	Jam nut M10
29	G07029	GB4141.22	Handwheel B12x100
30	G07030	5-17	Indicator
31	G07031	5-12	Locking piece (II)
32	G07032	GB70	Hex-socket bolt M10x80
33	G07033	5-16	Scale piece
34	G07034	5-01	Tailstock carriage

Diagram Number	Part Number	Reference Number	Description
35	G07035	5-15	Nut
36	G07036	S12278	Half dogpoint setscrew
37	G07037	GB70	Sockethead capscrew M10x40
38	G07038	GB75	Conepoint setscrew M8x12
39	G07039	S22420	Locking pin
40	G07040	5-14	Locking seat
41	G07041	5-13	Gib
42	G07042	6-20	Wiper
43	G07043	GB818	Slotted panhead screw M5x12
44	G07044	5-02	Tailstock
45	S12898		Arbor Plug
46	C30523		Drill Chuck Arbor (No tang)
47	72-001		Drill Chuck JT33